



PowerCI

Easy-to-understand reporting and metrics deliver more visibility and control.

A dashboard with intuitive reporting and metrics for complete transparency, cost visibility, and data monitoring across cases, your environment, and users—including activity history, storage, and workspace breakdown for easier cost control and recovery.

CUSTOMIZED DASHBOARD

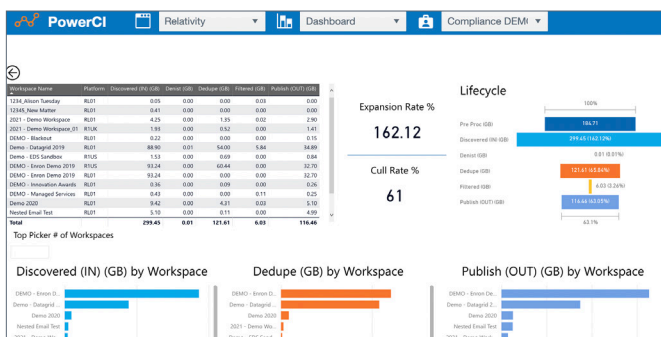
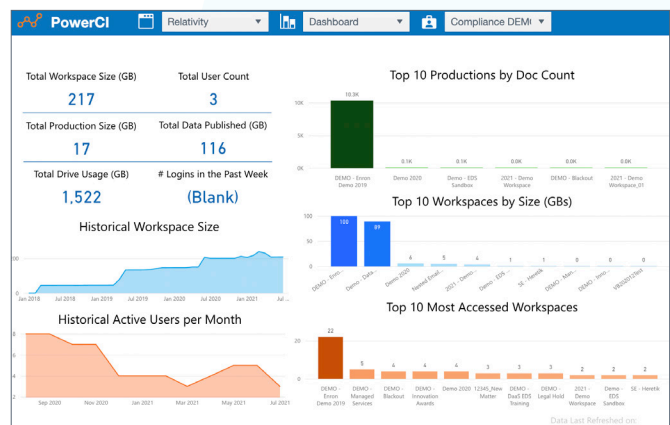
Audit and monitor data metrics directly from custom dashboards. PowerCI harnesses Microsoft's AI engine to provide insight into your environment, down to a workspace level, creating transparency into real-time data and the ability to view your hours, users and storage.

TRACKING AND MONITORING

Concise, user-friendly visual reporting and metrics makes it easy to monitor users, storage, processing, and production metrics.

CATEGORICAL MANAGEMENT

View your total hours by pertinent categories: analytics, expenses, hosting, media, processing, production, redactions, and translation.



TRACK TRENDS & PREDICT SPEND

Analyze your data for trends and historical usage to estimate costs for planning and expectation management. See how your data expands in processing across all your matters to help predict costs of future matters.

COST ALLOCATION & RECOVERY

Export data and ingest it into your billing system. The billing exports tab details workspace sizes per GB, users by workspace, and last case access dates, enabling you to zone in on specific matters and users - making cost allocation and recovery efforts as simple as the click of a button.



Cimplifi™ powers our client experience.

Discover the many advantages of Cimplifi and see why clients love working with us.



BURDEN-FREE TECHNOLOGY

Get access to a secure ecosystem of the most powerful eDiscovery and contract analytics tools, free from the burden of infrastructure, back-end implementation, or maintenance.



CLIENT-DRIVEN INTEGRATIONS

We make the best technologies work better through workflow and software integrations that streamline and integrate administration, processes, and reporting and deliver valuable insights and benefits.



SCALABLE & CUSTOMIZABLE

We give you the flexibility to deploy our platform of Cimplifi Legal Solutions™ for your entire operation or utilize it for a single project—scale up or down without limits. Tailor your tech stack and access a custom platform without any custom development.



TOP-TIER SECURITY

At Cimplifi, we're serious about security. We employ the highest standards across our enterprise and stand up to the most rigorous vetting.



COST MANAGEMENT & RECOVERY

Realize cost savings and gain visibility into your spend through metrics and dashboards that can help you track, manage, and recover costs.



EXPERT SUPPORT

We earn our clients' trust and confidence by delivering responsive and reliable service, proactive project management, and a deep bench of seasoned legal, technical, and subject matter experts.

Ready for a more empowering experience?
Get in touch today to speak with an expert.
info@cimplifi.com / Phone 833.215.2667