



# Spend - a feature of PowerCI

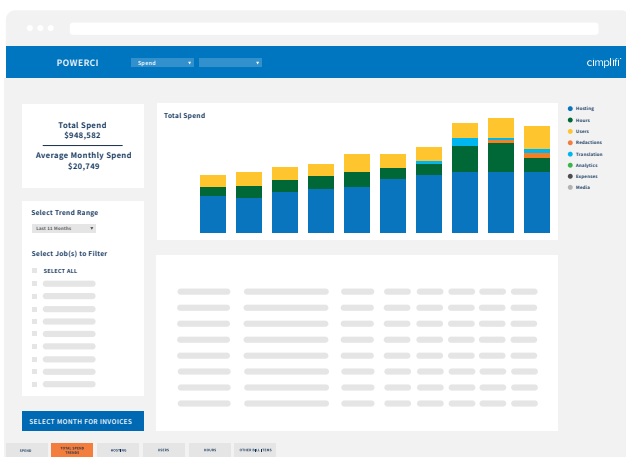
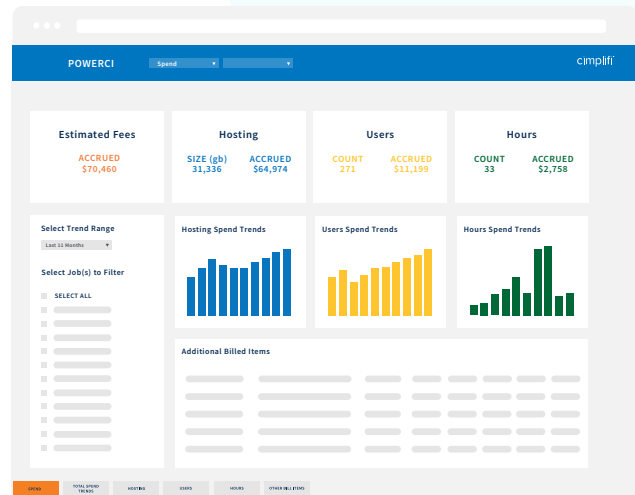
## Cimplifi Reporting. Cimplifi Spend.

PowerCI delivers complete transparency, cost visibility, and data monitoring across cases, your environment, and users—including activity history, storage, and workspace breakdown for easier cost control and recovery.

An intuitive dashboard built for reporting and metrics transparency, Spend offers insight into invoicing, historical and upcoming billing across all our products and applications, and monthly metrics for legal departments to control budgets, utilization, and spend.

### KNOW WHERE YOUR DATA IS AND WHAT YOU SPEND ON IT

- Transparency into real-time data and the ability to view your hours, users, and storage.
- No more waiting on reports or having to build your own analysis of your invoices. View and control your costs and see over month comparisons at your fingertips in our easy-to-use dashboard.



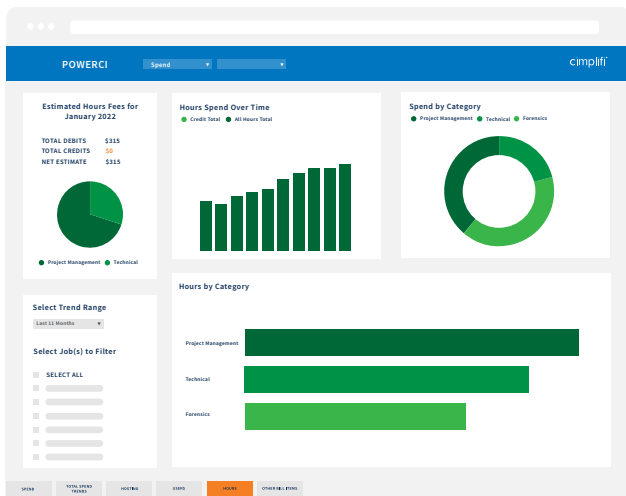
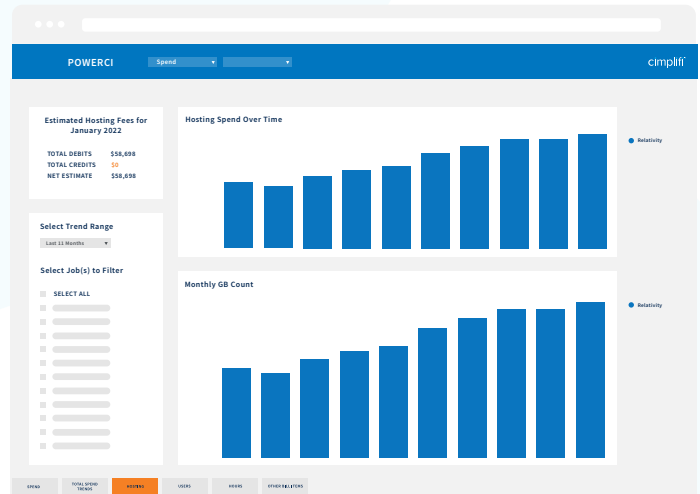
- View your total hours by pertinent categories: analytics, expenses, hosting, media, processing, production, and translation.



# Spend - a feature of PowerCI

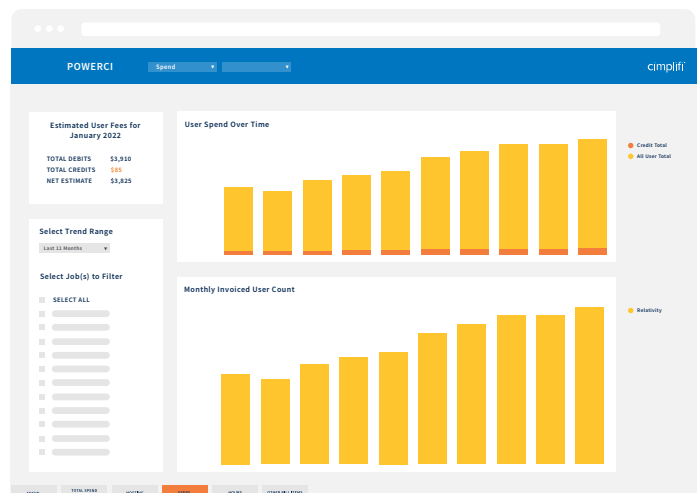
## Cimplifi Reporting. Cimplifi Spend.

- View your estimated monthly hosting spend over time and by product, archived storage, burst storage, DISCO, and Relativity.



- More insight into your spend for project management, technical support, forensics and professional services consulting.

- Actionable intelligence through analytics and reporting.
- More control and transparency of your environment.





# Cimplifi™ powers our client experience.

Discover the many advantages of Cimplifi and see why clients love working with us.



## **BURDEN-FREE TECHNOLOGY**

Get access to a secure ecosystem of the most powerful eDiscovery and contract analytics tools, free from the burden of infrastructure, back-end implementation, or maintenance.



## **CLIENT-DRIVEN INTEGRATIONS**

We make the best technologies work better through workflow and software integrations that streamline and integrate administration, processes, and reporting and deliver valuable insights and benefits.



## **SCALABLE & CUSTOMIZABLE**

We give you the flexibility to deploy our platform of Cimplifi Legal Solutions™ for your entire operation or utilize it for a single project—scale up or down without limits. Tailor your tech stack and access a custom platform without any custom development.



## **TOP-TIER SECURITY**

At Cimplifi, we're serious about security. We employ the highest standards across our enterprise and stand up to the most rigorous vetting.



## **COST MANAGEMENT & RECOVERY**

Realize cost savings and gain visibility into your spend through metrics and dashboards that can help you track, manage, and recover costs.



## **EXPERT SUPPORT**

We earn our clients' trust and confidence by delivering responsive and reliable service, proactive project management, and a deep bench of seasoned legal, technical, and subject matter experts.

Ready for a more empowering experience?  
Get in touch today to speak with an expert.  
[info@cimplifi.com](mailto:info@cimplifi.com) / Phone 833.215.2667