



# CI Image

Manipulate images with ease

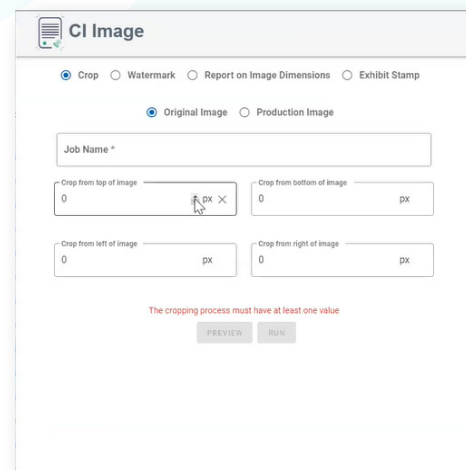
CI Image creates a more efficient way to manipulate images, from within Relativity. CI Image simplifies the process of image manipulation, making image production easier to do, no longer requiring you to learn a new tool, or export out of Relativity, saving time and frustrations.

## SEAMLESS INTEGRATION

From within Relativity, you can now crop images, add watermarks, report on image dimensions, and add custom exhibit stamps to images.

## EXPORT EFFICIENCY

Reduce manual intervention and errors that typically occur when exporting images out of and back into Relativity.



## FULL CUSTOMIZATION

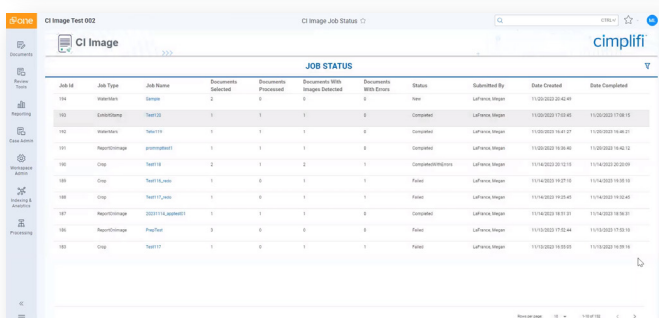
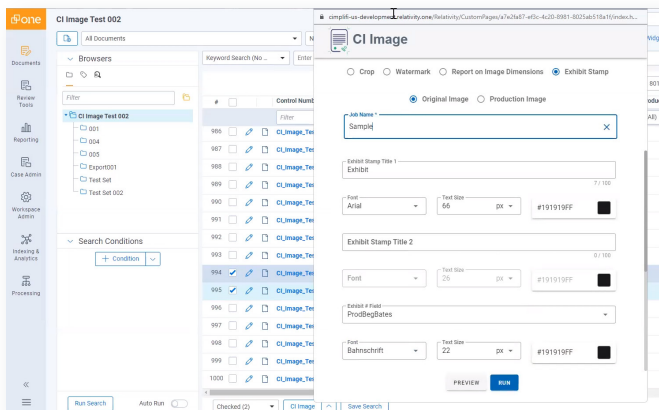
CI Image offers completely customized watermarks and exhibit stamps. Watermarks can be placed at any angle, they can be transparent, any color or font, and text can be added to customize your image watermark.

## IMAGE CONTROL

Easily adjust or undo image changes and backup images will be stored and tracked inside the Relativity database, tracked inside the ARM.

## COMPLIMENTARY ACCESS

No additional costs or tools are required to use CI Image as a Cimplifi Relativity client.





# Cimplifi™ powers our client experience.

Discover the many advantages of Cimplifi and see why clients love working with us.



## **BURDEN-FREE TECHNOLOGY**

Get access to a secure ecosystem of the most powerful eDiscovery and contract analytics tools, free from the burden of infrastructure, back-end implementation, or maintenance.



## **CLIENT-DRIVEN INTEGRATIONS**

We make the best technologies work better through workflow and software integrations that streamline and integrate administration, processes, and reporting and deliver valuable insights and benefits.



## **SCALABLE & CUSTOMIZABLE**

We give you the flexibility to deploy our platform of Cimplifi Legal Solutions™ for your entire operation or utilize it for a single project—scale up or down without limits. Tailor your tech stack and access a custom platform without any custom development.



## **TOP-TIER SECURITY**

At Cimplifi, we're serious about security. We employ the highest standards across our enterprise and stand up to the most rigorous vetting.



## **COST MANAGEMENT & RECOVERY**

Realize cost savings and gain visibility into your spend through metrics and dashboards that can help you track, manage, and recover costs.



## **EXPERT SUPPORT**

We earn our clients' trust and confidence by delivering responsive and reliable service, proactive project management, and a deep bench of seasoned legal, technical, and subject matter experts.

Ready for a more empowering experience?  
Get in touch today to speak with an expert.  
[info@cimplifi.com](mailto:info@cimplifi.com) / Phone 833.215.2667